



MAPRO[®]
MAATWERK IN PROJECT EN PRODUCT



Range of products Cubu flex life

Modern design for
impressive effects

Döllken
Profiles

.....
we create.
we innovate.

SURTECO GROUP

Convincing advantages – easy to process – robust and stable

All products in the Cubu range are hard-wearing and resistant to climatic influences. Thanks to the special product characteristics and material quality, they can be quickly and easily processed. The result: perfect floor edging and an appearance that will give pleasure for years to come.

- High-quality skirting
- Impact-proof
- Resistant to humidity
- Perfectly abutted corners; no optical gaps due to open edge joints, use of silicone or moulded components
- easy installation with the help of the special Döllken system tools
- Greenguard-certified: can thus be used in particularly sensitive environments, such as schools and healthcare
- Suitable for use with all flooring types; the XL version is designed specifically for use with laminate floorings



Resistant to climatic effects (humidity and major temperature fluctuations)



Hard-wearing and resistant to impact



Can be mitred: easy to process, rapid installation

Environmental certifications



Greenguard Gold Certification

All products by Döllken-Weimar conform to the most stringent and comprehensive standards that apply to the release of emissions in ambient air; they can thus be used in particularly sensitive environments, such as schools and healthcare facilities.



Low emission

All core skirtings have a very low level of emission. No harmful organic compounds are released into the indoor air.



TCF

Chlorine is not used in production. This eliminates the risk of dioxin emissions in the fire behaviour.

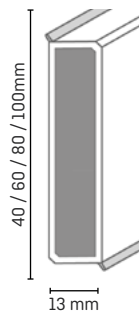
The right skirting for each floor covering



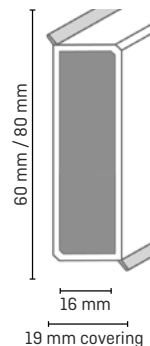
Three available basic types

(see profile overview to the right)

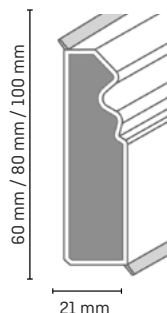
Cubu flex life



Cubu flex life XL Cubu Touch & Style



Hamburger Style



Installation recommendations



Döllken
mitre tool*



Döllken
hot-melt glue

* A special clamping device must be used to install Cubu flex life XL, Cubu Touch & Style and Hamburger Style



Corners and end sections can be directly cut from the skirting with the help of the Döllken mitre tool. The process is simple and produces perfect optical results.

The skirting can then be readily attached to the wall using Döllken hot-melt glue.

Cubu flex life Premium

The special features of Cubu flex life premium are immediately apparent; it is covered by a highly robust genuine metal film and is ideal for use as a highlight feature and will also complement a wide range of design concepts. Cubu flex life Premium has a profile width of 12.6 mm and is available in six different colours.

Colours



chromium
1189



stainless steel
1190



champagne
1191



brass
1192



bright copper
1193



black fantasie
2419

Cubu flex life & Cubu flex life XL

Cubu flex life

The standard version of Cubu flex life has a profile width of 12.6 mm and is available in four different heights and four different colours. Universal corner trims can be used on internal and external corners and provide an alternative to the use of the Döllken mitre tool.

Colours



white
1013 (5012)



silver
1063 (W199)



light grey
1012 (1202)



anthracite
1209

Cubu flex life XL

The XL version has a profile width of 16 mm and with its maximum clearance of 19 mm is the optimum solution for use where there are particularly large expansion gaps, like with laminate flooring. This version is available in two different heights and three different colours.

Colours



white
1013 (5012)



silver
1063 (W199)



light grey
1012 (1202)

Cubu Touch & Style

The Cubu Touch & Style is a new product series with a three-dimensional embossed surface. This gives the skirting a tactile feel and a natural decor. It also has a covering of 19 mm and is therefore particularly suitable for laminate floors. More product variants can be found at www.doellken-profiles.com

Colours



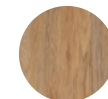
melua
2934



morissette
2935



tibidabo
2936



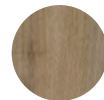
mabelle
2937



sabrine
2938



edeline
2939



takoua
2940



racine
2941



madelon
2942



tamija
2943



maelle
2944



regine
2945



clooney
2946



ligna
2947



leander
2948



aralie
2949



poulin
2950



careen
2951



tindari
2952



rachel
2953



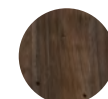
nitens
2954



safia
2955



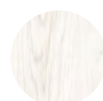
adalie
2956



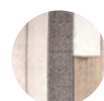
gauguin
2957



andersen
2958



puccini
2959



zonda
2960



canvas
2961



tajet
2962



Deceptively real wood imitations for a high-quality look



For special floor perfection: Cubu Premium or Cubu Touch & Style

Cubu Stone & Style

Our new trending product range combines the characteristics of the standard Cubu flex life version with the latest in design styles. The attractive finishes are the perfect match for stone flooring and vinyl flooring with stone or concrete colouration. The Cubu Stone & Style has a profile width of 12.6 mm and is available in ten different colours.



All products are extremely robust and can be mitred.

Colours



iron rust
2818



metal
2821



slate anthra-
cite
2819



Pale slate
2820



slate
2822



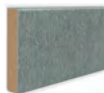
dark traver-
tine
2824



travertine
2825



pale grey
concrete
2816



grey concrete
2817



silver concrete
2823

Hamburger Style

This, our latest product development, combines the tried-and-tested style of classic wood skirting boards with the superb processing characteristics of solidcore skirting. The result is form-stable, plastic-coated skirting with enhanced durability. The Hamburger Style has a maximum clearance of 19 mm and thus, like Cubu flex life XL, it is the optimum solution in situations where there are particularly large expansion gaps.

Colours



white
1013 [5012]

Overview of available heights and packaging units

Product	Available heights(in mm)	Sales units
Cubu flex life Premium	60	Each sales unit = 10 x 2,5 m
Cubu flex life	40 mm, 60 mm, 80 mm, 100 mm	Each sales unit = 10 x 2,5 m
Cubu flex life XL	60 mm, 80 mm	Each sales unit = 8 x 2,5 m (Cubu flex life XL 60/19) Each sales unit = 6 x 2,5 m (Cubu flex life XL 80/19)
Cubu Touch & Style	60 mm	Each sales unit = 8 x 2,5 m
Cubu Stone & Style	60 mm	Each sales unit = 10 x 2,5 m **
Hamburger Style	60 mm, 80 mm, 100 mm	Each sales unit = 8 x 2,5 m (HS 60) Each sales unit = 6 x 2,5 m (HS 80) Each sales unit = 7 x 2,5 m (HS 100)

* Available on request

** also in custom-cut sizes (with surcharge)

Döllken
Profiles

we create.
we innovate.

SURTECO GROUP

MAPRO[®]
MAATWERK IN PROJECT EN PRODUCT

Döllken Profiles GmbH
Stangenallee 3
99428 Nohra b. Weimar
T: +49 3643 4170 711
F: +49 3643 4170 330
info@doellken-profiles.com
www.doellken-profiles.com
Follow us on  

Mapro B.V.
Edisonweg 4
1821 BN Alkmaar
The Netherlands
Tel: +31 (0)72 30 30 009
info@mapro.nl
www.mapro.nl